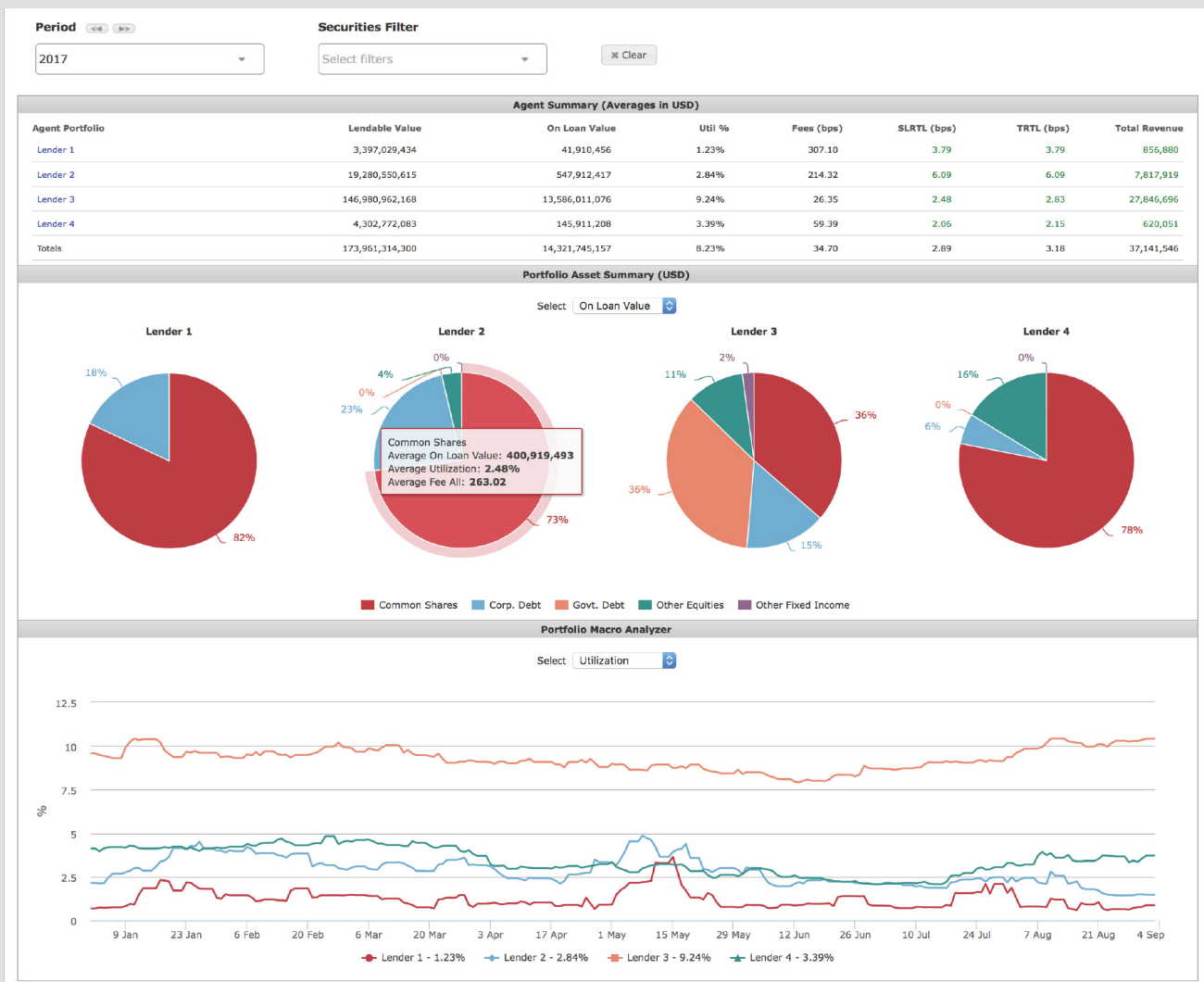


DATALEND PORTFOLIO

For Beneficial Owners

Review all your securities lending data in one place with DataLend Portfolio. Whether you have a single- or multi-agent securities lending program, your single login to DataLend Portfolio will provide you with an aggregated view of your securities lending activity. Drill down into each program to access DataLend’s standardized performance metrics, used by agent lenders around the globe.

Agent Lender Summary Statistics



Aggregate View

Features key metrics across all your securities lending programs over a customized time period, including:

- Asset allocation
- On loan
- Utilization
- Fee
- Revenue
- Return to lendable

DATALEND PORTFOLIO

Performance Measurement

Drill down into each agent lender program to analyze performance at a program level. DataLend Portfolio features:

Exclusive Data

DataLend has access to inventory and loan positions not included in any other securities lending data service. Ensure this data is part of your analysis to obtain the most accurate performance measurement possible.

Flexibility

Account Drilldown

- Identify which accounts are under or over-performing versus the group
- Navigate to a selected account for further analysis

Create-Your-Own Performance Metrics

- Multi-select by asset class, country and sector over a customized time period and tailored

Standardized Peer Groups

Ensure consistency across performance reviews through the use of DataLend's standardized peer groups. DataLend's peer groups are controlled by the DataLend proprietary algorithm. Choose from peer groups based on fiscal location, legal entity and/or collateral type.

Peer group data is always matched on security and dividend rate. Refine the matching strategy using the options below:

Structure Matching

- Peer Group 1: Industry Group
- Peer Group 2: Legal Structure and Collateral Type
- Peer Group 3: Legal Structure and Fiscal Location
- Peer Group 4: Legal Structure, Fiscal Location and Collateral Type

Risk Matching (Data available from November 2017)

- Risk Group 1: DataLend Collateral Matching

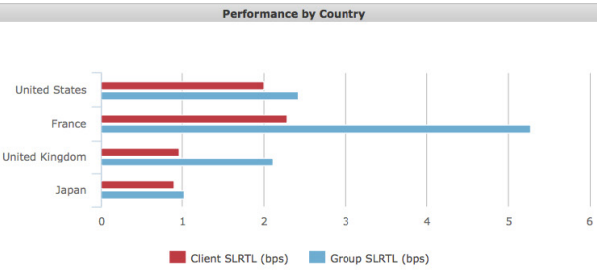
Client Collateral Type(s):
Cash, Non-Cash
Non-Cash Collateral:
Sov1

Group Collateral Type(s):
Cash, Non-Cash
Non-Cash Collateral:
Sov1

Agent Lender Performance Metrics

Program/Client/Group: Lender 3 | Period: 2018 Q1 | Securities Filter: US, UK, FR, JP | Peer Group: Peer Group 5

Country	Client				Group			
	Util %	Fees (bps)	SLRTL (bps)	Total Revenue	Util %	Fees (bps)	SLRTL (bps)	Total Revenue
United States	9.30	21.11	2.00	6,396,729	9.45	25.28	2.42	9,415,065
France	6.81	32.44	2.29	278,930	17.85	29.18	5.27	617,468
United Kingdom	1.31	71.06	0.96	100,519	6.56	31.85	2.11	233,515
Japan	0.48	178.47	0.90	69,716	1.89	53.60	1.03	88,945



Sector	Client				Group			
	Util %	Fees (bps)	SLRTL (bps)	Total Revenue	Util %	Fees (bps)	SLRTL (bps)	Total Revenue
Consumer Discretionary	12.29	31.05	3.90	1,075,632	8.13	43.43	3.59	1,085,068
Information Technology	11.14	13.64	1.55	926,242	6.70	19.21	1.30	878,069
Energy	12.08	46.24	5.98	718,133	9.25	58.65	5.55	732,069
Health Care	8.76	27.37	2.45	650,341	6.16	35.60	2.23	672,228
Materials	5.18	81.49	4.31	300,662	5.39	71.08	4.34	338,612
Industrials	6.68	12.92	0.88	288,163	6.39	16.10	0.99	419,479
Financials	3.13	22.02	0.70	256,979	3.16	21.87	0.70	360,498
Consumer Staples	5.87	21.57	1.30	213,646	5.73	23.63	1.37	269,398
Real Estate	8.23	11.28	0.95	125,118	8.20	13.49	1.12	220,560
Utilities	2.85	54.51	1.62	85,431	4.23	55.88	2.43	150,521
Telecommunication Ser...	3.33	37.71	1.30	46,506	5.57	29.15	1.65	66,223

